

PVC-U UNIONS ENLACES 3 PIEZAS PVC-U

Unions are the preferred choice over flange adaptors for the connection of plastic pipes. With no metal parts, there is no corrosion and the weight is also reduced.

They are only available in small sizes (up until D110).

The union ends are manufactured in plain ends for solvent socket or thread always according the sizing standards, doing this system appropriate to adapt to other elements or systems. Cepex unions feature an o-ring in order to ensure better unions, so it is not needed the use of PTFE tape between nut and union end (it is only needed in the threaded ends).

They are not recommended when connected to pipe under bending stress.

The union nut should be tightened by hand. Must use a strap wrench for big sizes (D75, D90, D110).

With this type of unions, it is possible to mix several plastic materials.

Cuando hay que unir plásticos, éstos son preferidos a las bridas, ya que no contienen ninguna parte de metal y el diámetro exterior es más reducido.

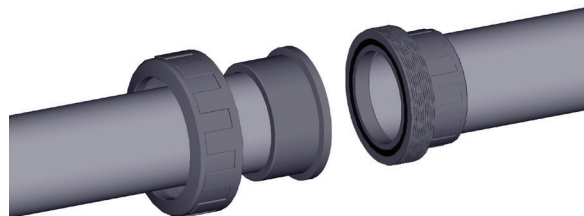
En contrapartida sólo están disponibles para diámetros pequeños (hasta D110).

Los manguitos de conexión están fabricados en terminaciones lisas de encolado o roscadas, siempre bajo normativas standards, haciendo posible la adaptación a otros componentes (incluso de materiales distintos).

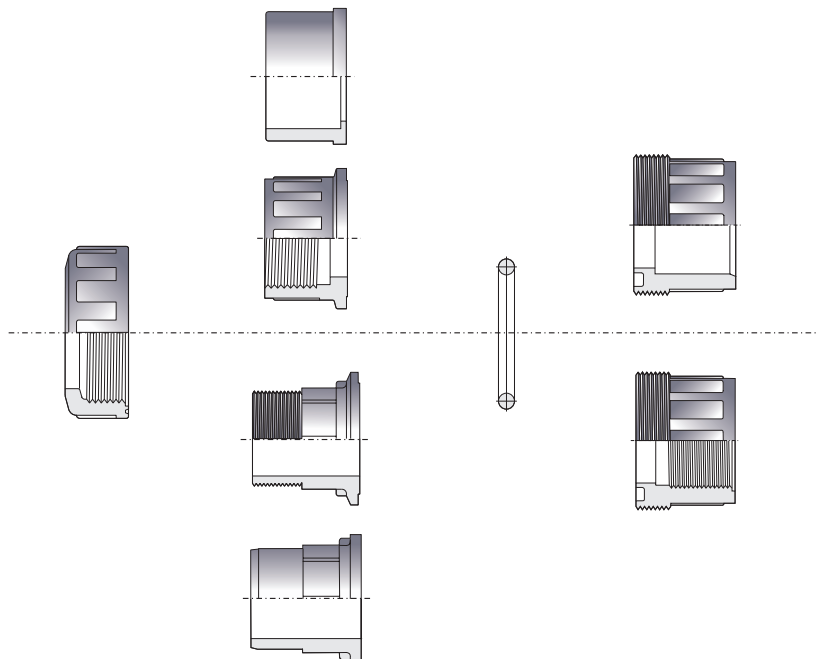
Los enlaces 3 piezas Cepex incorporan junta para asegurar estanqueidad entre los dos manguitos de la unión, por lo que no debe usarse cinta de PTFE entre tuerca y manguito (usar cinta de PTFE solamente en las terminaciones de manguito roscadas). No son recomendables cuando el tubo tenga que estar sometido a fuerza de flexión (debido a posibles desalineaciones).

No es necesario el uso de ninguna herramienta, se rosca con las manos. Usar llave de cinta en diámetros grandes (D75, D90, D110).

Mediante estos enlaces, se pueden combinar diferentes tipos de plásticos.



CONNECTION POSSIBILITIES POSIBILIDADES DE CONEXIÓN



Available standards

Solvent socket: metric, BS, ASTM
Threaded: BSP, NPT

Standards disponibles

Encolar: métrico, BS, ASTM
Roscar: BSP, NPT

Ask for other types of unions or other materials (PP, PE100...)
Consultar otros tipos de conexión o materiales (PP, PE100...)

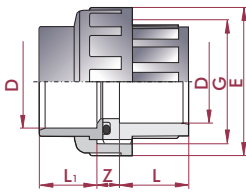
UP. 50. SF - UNION

Union

- Female solvent socket
- Metric series
- EPDM o-ring

Enlace 3 piezas

- Encolar hembra
- Serie métrica
- Anillo tórico en EPDM



D	DN	PN	REF.	CODE
16	12	16	05 50 016	20157
20	15	16	05 50 020	02327
25	20	16	05 50 025	02328
32	25	16	05 50 032	02329
40	32	16	05 50 040	02330
50	40	16	05 50 050	02331
63	50	16	05 50 063	02332
75	65	10	05 50 075	02333
90	80	10	05 50 090	02334
110	100	10	05 50 110	02335

L	L ₁	Z	G	E	o-ring
14	14	13	¾"	34	15,5 x 2,6
16	16	13	1"	41	20,2 x 3,5
19	19	13	1¼"	52	28,2 x 3,5
22	22	13	1½"	60	32,9 x 3,5
26	26	15	2"	74	40,6 x 5,3
31	31	17	2¼"	80	47,0 x 5,3
38	38	21	2¾"	99	59,7 x 5,3
44	44	21	3½"	120	75,6 x 5,3
51	51	24	4"	138	91,4 x 5,3
61	61	26	5½"	179	110,5x5,3

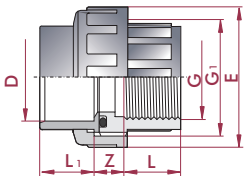
UP. 50. SFT - UNION ADAPTOR

Union adaptor

- Female solvent socket x BSP female thread
- Metric series
- EPDM o-ring

Enlace 3 piezas mixto

- Encolar hembra x rosca hembra BSP
- Serie métrica
- Anillo tórico en EPDM



D x G	DN	PN	REF.	CODE
16 x ¾"	12	10	05 50 416	20158
20 x ½"	15	10	05 50 420	02336
25 x ¾"	20	10	05 50 425	02337
32 x 1"	25	10	05 50 432	02338
40 x 1¼"	32	10	05 50 440	02339
50 x 1½"	40	10	05 50 450	02340
63 x 2"	50	10	05 50 463	02341
75 x 2½"	65	10	05 50 475	02342
90 x 3"	80	10	05 50 490	02343
110 x 4"	100	10	05 50 510	02344

L	L ₁	Z	G ₁	E	o-ring
14	14	13	¾"	34	15,5 x 2,6
16	16	13	1"	41	20,2 x 3,5
19	19	13	1¼"	52	28,2 x 3,5
22	22	13	1½"	60	32,9 x 3,5
26	26	15	2"	74	40,6 x 5,3
31	31	17	2¼"	80	47,0 x 5,3
38	38	21	2¾"	99	59,7 x 5,3
44	44	21	3½"	120	75,6 x 5,3
51	51	24	4"	138	91,4 x 5,3
61	61	26	5½"	179	110,5x5,3

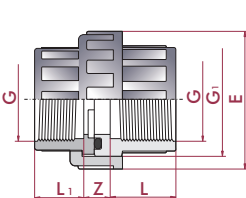
UP. 50. FT - UNION

Union

- BSP female thread
- EPDM o-ring

Enlace 3 piezas

- Rosca hembra BSP
- Anillo tórico en EPDM



G	DN	PN	REF.	CODE
¾"	12	10	05 50 616	20159
½"	15	10	05 50 620	02345
¾"	20	10	05 50 625	02346
1"	25	10	05 50 632	02347
1¼"	32	10	05 50 640	02348
1½"	40	10	05 50 650	02349
2"	50	10	05 50 663	02350
2½"	65	10	05 50 675	07713
3"	80	10	05 50 690	07714
4"	100	10	05 50 710	07715

L	L ₁	Z	G ₁	E	o-ring
14	12	13	¾"	34	15,5 x 2,6
16	15	12	1"	41	20,2 x 3,5
19	17	12	1¼"	52	28,2 x 3,5
22	20	14	1½"	60	32,9 x 3,5
26	24	16	2"	74	40,6 x 5,3
31	25	18	2¼"	80	47,0 x 5,3
38	29	20	2¾"	99	59,7 x 5,3
44	34	21	3½"	120	75,6 x 5,3
51	37	24	4"	138	91,4 x 5,3
61	42	26	5½"	179	110,5x5,3

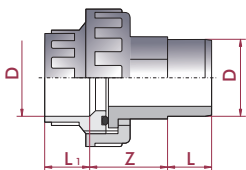
UP. 51. SMF - UNION

Union

- Male x female solvent socket
- Metric series
- EPDM o-ring

Enlace 3 piezas

- Encolar macho x hembra
- Serie métrica
- Anillo tórico en EPDM



D	DN	PN	REF.	CODE
50	40	10	05 51 050	02351
63	50	10	05 51 063	02352

L	L ₁	Z
31	31	48
38	38	62

FPM o-rings available upon request.
Juntas en FPM disponibles bajo pedido.

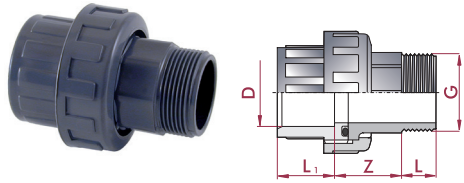
UP. 51. SMT - UNION ADAPTOR

Union adaptor

- Female solvent socket x BSP male thread
- Metric series
- EPDM o-ring

Enlace 3 piezas mixto

- Encolar hembra x roscar macho BSP
- Serie métrica
- Anillo tórico en EPDM



D x G	DN	PN	REF.	CODE
16 x 3/8"	12	10	05 51 416	20160
20 x 1/2"	15	10	05 51 420	02353
25 x 3/4"	20	10	05 51 425	02354
32 x 1"	25	10	05 51 432	02355
40 x 1 1/4"	32	10	05 51 440	02356
50 x 1 1/2"	40	10	05 51 450	02357
63 x 2"	50	10	05 51 463	02358
75 x 2 1/2"	65	10	05 51 475	02359
90 x 3"	80	10	05 51 490	02360
110 x 4"	100	10	05 51 510	02361

L ₁	L	Z
14	12	29
16	15	33
19	16	35
22	19	40
26	21	40
31	21	48
38	28	62
44	30	70
51	33	62
61	40	70

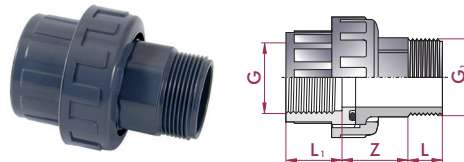
UP. 51. MFT - UNION

Union

- BSP female x male thread
- EPDM o-ring

Enlace 3 piezas

- Roscar hembra x macho BSP
- Anillo tórico en EPDM



G x G ₁	DN	PN	REF.	CODE
3/8" x 3/8"	12	10	05 51 616	20161
1/2" x 1/2"	15	10	05 51 620	02362
3/4" x 3/4"	20	10	05 51 625	02363
1" x 1"	25	10	05 51 632	02364
1 1/4" x 1 1/4"	32	10	05 51 640	02365
1 1/2" x 1 1/2"	40	10	05 51 650	02366
2" x 2"	50	10	05 51 663	02367
2 1/2" x 2 1/2"	65	10	05 51 675	02368
3" x 3"	80	10	05 51 690	02369
4" x 4"	100	10	05 51 710	02370

L ₁	L	Z
14	12	30
16	15	33
19	16	35
22	19	40
26	21	40
31	21	48
38	28	62
44	30	70
51	33	62
61	40	70

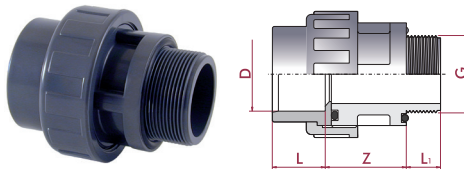
UP. 51. SMT2 - UNION ADAPTOR

Union adaptor

- Female solvent socket x BSP male thread
- Metric series
- EPDM o-ring

Enlace 3 piezas mixto

- Encolar hembra x roscar macho BSP
- Serie métrica
- Anillo tórico en EPDM



D x G	DN	PN	REF.	CODE
50 x 1 1/2"	40	10	05 51 250	07716
50 x 2"	40	10	05 51 251	26638
63 x 2"	50	10	05 51 263	07717

L	L ₁	Z
31	21	49
31	26	46
38	26	51

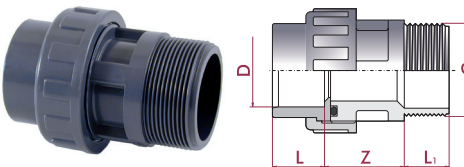
UP. 51. SFMT - UNION

Union adaptor

- Female solvent socket x BSP male thread
- Metric series
- EPDM o-ring

Enlace 3 piezas mixto

- Encolar hembra x roscar macho BSP
- Serie métrica
- Anillo tórico en EPDM



D x G	DN	PN	REF.	CODE
50 x 2"	40	10	05 51 451	09033

L	L ₁	Z
31	28	49

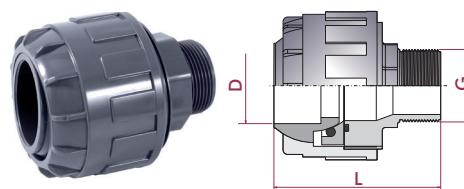
UP. 57. SFMT - SELF-ALIGN UNION

Self-align union

- Max. misalignment ±4°
- Female solvent socket x BSP male thread
- Metric series

Manguito orientable

- Desalineación max. ±4°
- Encolar hembra x roscar macho BSP
- Serie métrica



D x G	DN	PN	REF.	CODE
50 x 1 1/2"	40	10	05 57 550	18874

L
110

FITTINGS FOR UNIONS ACCESORIOS ENLACES 3 PIEZAS

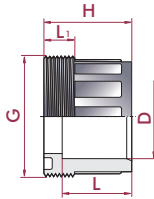
UP. 21. SFMT - ADAPTOR BUSH UNION

Adaptor union bush

- Female solvent socket x BSP male thread
- Metric series

Manguito enlace mixto

- Encolar hembra x roscar macho BSP
- Serie métrica



D x G	DN	PN	REF.	CODE
20 x 1"	15	10	05 21 420	02148
25 x 1¼"	20	10	05 21 425	02150
32 x 1½"	25	10	05 21 432	02151
40 x 2"	32	10	05 21 440	02153
50 x 2½"	40	10	05 21 450	02154
63 x 2¾"	50	10	05 21 463	02156
75 x 3½"	65	10	05 21 475	02157
90 x 4"	80	10	05 21 490	02158
110 x 5½"	100	10	05 21 510	02159

L	L ₁	H
16	10	26
19	11	29
22	12	32
28	15	39
31	16	46
38	18	56
44	18	62
51	18	69
61	31	79

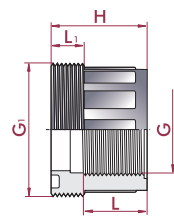
UP. 21. MFT - UNION BUSH

Union bush

- BSP male x female thread

Manguito enlace

- Roscar macho x hembra BSP



G ₁ x G	DN	PN	REF.	CODE
1" x ½"	15	10	05 21 620	02160
1¼" x ¾"	20	10	05 21 625	02162
1½" x 1"	25	10	05 21 632	02163
2" x 1¼"	32	10	05 21 640	02165
2¼" x 1½"	40	10	05 21 650	02166
2¾" x 2"	50	10	05 21 663	02168
3½" x 2½"	65	10	05 21 675	02169
4" x 3"	80	10	05 21 690	02170
5½" x 4"	100	10	05 21 710	02171

L	L ₁	H
16	10	26
19	11	29
22	12	32
30	15	39
31	16	46
38	18	56
44	18	62
51	18	69
61	31	79

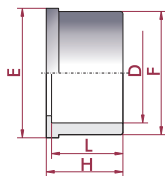
UP. 22. SF - UNION END

Union end

- Female solvent socket
- Metric series

Manguito enlace

- Encolar hembra
- Serie métrica



D	DN	PN	REF.	CODE
16	10	16	05 22 016	20229
20	15	16	05 22 020	02172
25	20	16	05 22 025	02173
32	25	16	05 22 032	02174
40	32	16	05 22 040	02175
50	40	16	05 22 050	02176
63	50	16	05 22 063	02177
75	65	16	05 22 075	02178
90	80	16	05 22 090	02179
110	100	16	05 22 110	02180

L	E	H	F
14	24	17	22
16	30	19	27
19	39	22	36
22	45	25	41
26	56	29	53
31	63	34	59
38	78	41	74
44	97	47	92
51	110	56	105
61	147	66	131

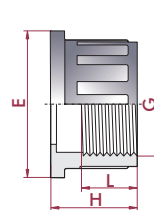
UP. 22. FT - UNION END

Union end

- BSP female thread
- Metric series

Manguito enlace

- Roscar hembra
- Serie métrica



G	DN	PN	REF.	CODE
¾"	10	10	05 22 616	20230
½"	15	10	05 22 620	16310
¾"	20	10	05 22 625	16311
1"	25	10	05 22 632	16312
1¼"	32	10	05 22 640	16313
1½"	40	10	05 22 650	16314
2"	50	10	05 22 663	16315
2½"	65	10	05 22 675	16316
3"	80	10	05 22 690	16317
4"	100	10	05 22 710	16318

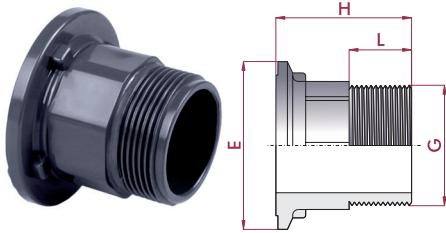
L	H	E
12	17	24
15	21	30
17	23	39
20	26	45
24	30	56
25	35	63
29	42	78
34	48	97
37	57	110
42	69	146

UP. 22. MT - UNION END
Union end

- BSP male thread

Manguito

- Roscar macho BSP



G	PN	REF.	CODE
3/8"	10	05 22 416	25959
1/2"	10	05 22 420	25960
3/4"	10	05 22 425	25961
1"	10	05 22 432	25962
1 1/4"	10	05 22 440	25963
1 1/2"	10	05 22 450	25964
2"	10	05 22 463	25965
2 1/2"	10	05 22 475	25966
3"	10	05 22 490	25967
4"	10	05 22 510	25968

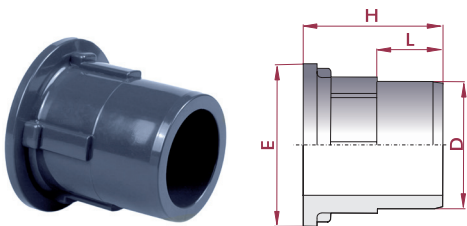
L	H	E
12	33	24
15	38	30
16	41	39
19	48	45
21	50	57
21	57	63
28	70	78
30	72	97
33	77	110
40	98	147

UP. 22. SM - UNION END
Union end

- Male solvent socket
- Metric series

Manguito

- Encolar macho
- Serie métrica



D	PN	REF.	CODE
50	16	05 22 250	25957
63	16	05 22 263	25958

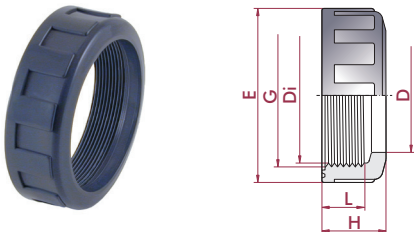
L	H	E
31	66	63
38	80	78

UP. 23. FT - UNION NUT
Union nut

- BSP female thread

Tuerca

- Roscar hembra BSP



G	PN	REF.	CODE
3/4" (3/4")	10	05 23 625	02187
1" (1/2")	10	05 23 632	02188
1 1/4" (3/4")	10	05 23 640	02189
41,5	10	05 23 641	02190
1 1/2" (1")	10	05 23 650	02191
2" (1 1/4")	10	05 23 663	02192
2 1/4" (1 1/2")	10	05 23 664	02193
2"	10	05 23 665	02194
2 1/2"	10	05 23 675	02195
2 3/4" (2")	10	05 23 676	02196
3 1/2" (2 1/2")	10	05 23 692	02197
4" (3")	10	05 23 710	02198
5 1/2" (4")	10	05 23 741	02199

L	H	E	D	Di
15	20	36	22	24
15	20	41	27	30
16	22	52	36	39
12	18	53	33	39
20	26	60	41	45
21	26	74	53	57
22	30	80	59	63
19	28	70	46	54
18	27	90	64	72
28	36	99	74	78
28	36	120	92	97
28	38	133	105	110
41	56	177	131	148

The size of the corresponding union is indicated in brackets.

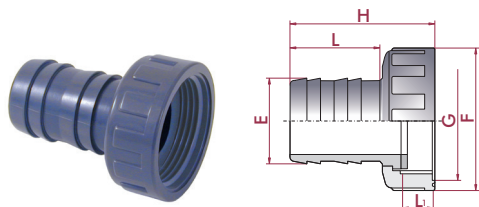
Entre paréntesis se indica la medida del enlace 3 piezas correspondiente.

PVC-U SPIGOTS ENLACES ESPIGA PVC-U

UP. 55. SPI - SPIGOT UNION

Spigot and nut union

Conjunto espiga y tuerca



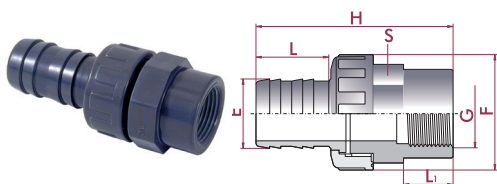
E x G	REF.	CODE
16 x 3/4"	05 55 016	02399
18 x 3/4"	05 55 018	02400
20 x 3/4"	05 55 020	02401
25 x 1"	05 55 025	02402
20 x 1"	05 55 026	15764
30 x 1 1/4"	05 55 032	02403
40 x 1 1/2"	05 55 040	02404
50 x 2"	05 55 050	02405
38 x 2"	05 55 051	02406
60 x 2 1/2"	05 55 063	02407

H	F	L	L ₁
46	36	35	10
46	36	35	10
49	36	38	10
56	41	42	10
51	41	36	10
66	52	47	10
73	60	52	14
82	74	57	14
82	74	57	14
88	90	60	18

UP. 55. SPIFT - SPIGOT UNION

Spigot union female threaded

Enlace espiga rosca hembra



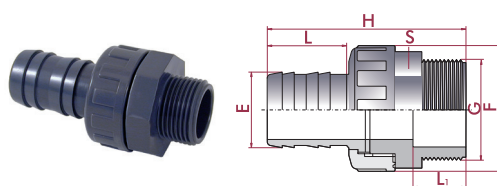
E x G	REF.	CODE
16 x 3/8"	05 55 416	02408
18 x 1/2"	05 55 418	02409
20 x 1/2"	05 55 420	02410
25 x 3/4"	05 55 425	02411
30 x 1"	05 55 432	02412
40 x 1 1/4"	05 55 440	02413
50 x 1 1/2"	05 55 450	02414
38 x 1 1/2"	05 55 451	02415
60 x 2"	05 55 463	02416

H	F	S	L	L ₁
66	36	32	35	14
70	36	32	35	18
73	36	32	38	18
81	41	36	42	19
98	52	46	47	25
106	61	55	52	25
116	74	65	57	25
116	74	65	57	25
127	90	80	60	29

UP. 55. SPIMT - SPIGOT UNION

Spigot union male threaded

Enlace espiga rosca macho



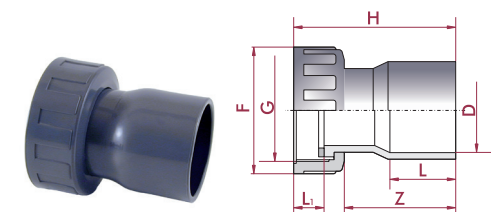
E x G	REF.	CODE
16 x 3/8"	05 55 616	02417
18 x 1/2"	05 55 618	02418
20 x 1/2"	05 55 620	02419
25 x 3/4"	05 55 625	02420
30 x 1"	05 55 632	02421
40 x 1 1/4"	05 55 640	02422
50 x 1 1/2"	05 55 650	02423
38 x 1 1/2"	05 55 651	02424
60 x 2"	05 55 663	02425

H	F	S	L	L ₁
66	36	32	35	14
70	36	32	35	18
73	36	32	38	18
81	41	36	42	19
98	52	46	47	25
106	61	55	52	25
116	74	65	57	25
116	74	65	57	25
127	90	80	60	29

UP. 56. SF - FITTING CONNECTION

Fitting connection
• Female solvent socket
• Metric series

Conjunto raccord conexión
• Encolar hembra
• Serie métrica



D x G	PN	REF.	CODE
40 x 2"	16	05 56 440	05350
50 x 1 1/2"	16	05 56 451	75937
50 x 2"	16	05 56 450	75938

L	Z	H	F	L ₁
26	16	46	75	17
32	64	91	60	13
32	64	103	75	17

PVC-U UNIONS

ENLACES 3 PIEZAS PVC-U

Unions are the preferred choice over flange adaptors for the connection of plastic pipes. With no metal parts, there is no corrosion and the weight is also reduced.

They are only available in small sizes (up until D110).

The union ends are manufactured in plain ends for solvent socket or thread always according the sizing standards, doing this system appropriate to adapt to other elements or systems. Cepex unions feature an o-ring in order to ensure better unions, so it is not needed the use of PTFE tape between nut and union end (it is only needed in the threaded ends).

They are not recommended when connected to pipe under bending stress.

The union nut should be tightened by hand. Must use a strap wrench for big sizes (D75, D90, D110).

With this type of unions, it is possible to mix several plastic materials.

Cuando hay que unir plásticos, éstos son preferidos a las bridas, ya que no contienen ninguna parte de metal y el diámetro exterior es más reducido.

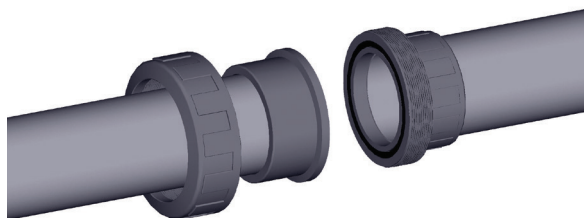
En contrapartida sólo están disponibles para diámetros pequeños (hasta D110).

Los manguitos de conexión están fabricados en terminaciones lisas de encolado o roscadas, siempre bajo normativas standards, haciendo posible la adaptación a otros componentes (incluso de materiales distintos).

Los enlaces 3 piezas Cepex incorporan junta para asegurar estanqueidad entre los dos manguitos de la unión, por lo que no debe usarse cinta de PTFE entre tuerca y manguito (usar cinta de PTFE solamente en las terminaciones de manguito roscadas). No son recomendables cuando el tubo tenga que estar sometido a fuerza de flexión (debido a posibles desalineaciones).

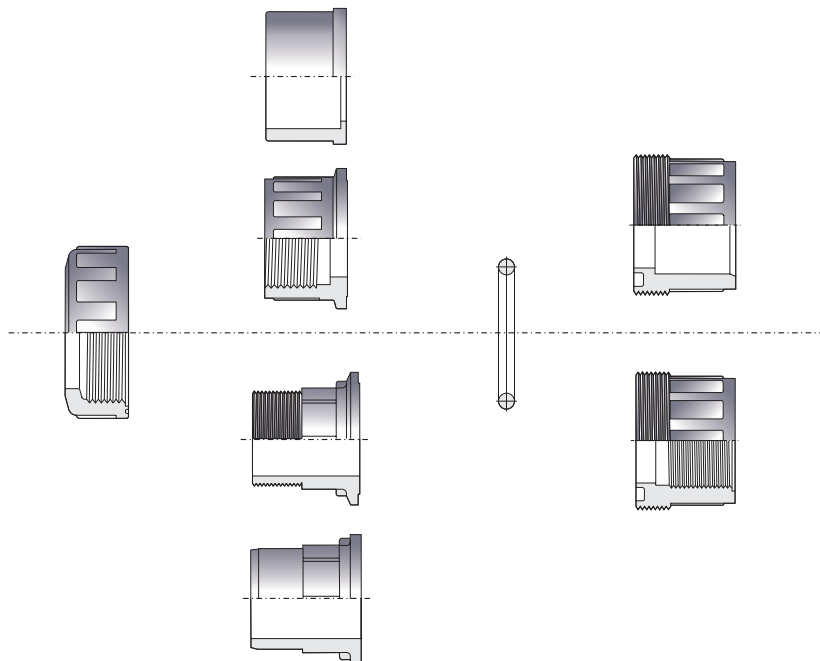
No es necesario el uso de ninguna herramienta, se rosca con las manos. Usar llave de cinta en diámetros grandes (D75, D90, D110).

Mediante estos enlaces, se pueden combinar diferentes tipos de plásticos.



CONNECTION POSSIBILITIES

POSIBILIDADES DE CONEXIÓN



Available standards

Solvent socket: metric, BS, ASTM

Threaded: BSP, NPT

Standards disponibles

Encolar: métrico, BS, ASTM

Roscar: BSP, NPT

Ask for other types of unions or other materials (PP, PE100...)

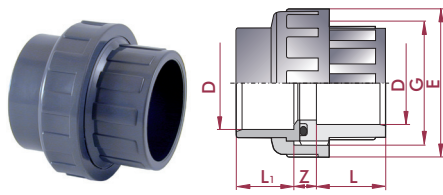
Consultar otros tipos de conexión o materiales (PP, PE100...)

UP. 50. SF. BS - UNION BS
Union

- Female solvent socket
- British Standard series
- EPDM O-Ring

Enlace 3 piezas

- Encolar hembra
- Serie British Standard
- Anillo tórico en EPDM



D	DN	PN	REF.	CODE
½"	15	16	05 50 901	07332
¾"	20	16	05 50 902	07333
1"	25	16	05 50 903	07334
1¼"	32	16	05 50 904	07335
1½"	40	16	05 50 905	07336
2"	50	16	05 50 906	07337
2½"	65	10	05 50 075 ^M	02333
3"	80	10	05 50 908	07806
4"	100	10	05 50 910	07807

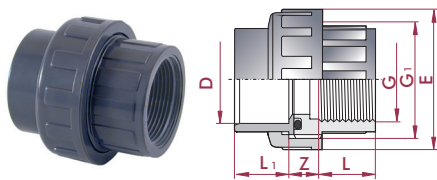
L	Z	G	E	o-ring
16	13	1"	41	20 x 3
19	13	1¼"	52	38 x 3
22	13	1½"	60	33 x 3
26	15	2"	74	41 x 5
31	17	2¼"	80	47 x 5
38	21	2¾"	99	60 x 5
44	21	3½"	120	76 x 5
51	24	4"	138	91 x 5
61	26	5½"	179	110 x 5

UP. 50. SFT. BS - UNION BS
Union adaptor

- Female solvent socket x BSP female thread
- British Standard series
- EPDM O-Ring

Enlace 3 piezas

- Encolar hembra x roscar hembra BSP
- Serie British Standard
- Anillo tórico en EPDM



D x G	DN	PN	REF.	CODE
½" x ½"	15	16	05 50 931	07255
¾" x ¾"	20	16	05 50 932	07256
1" x 1"	25	16	05 50 933	07257
1¼" x 1¼"	32	16	05 50 934	07258
1½" x 1½"	40	16	05 50 935	07259
2" x 2"	50	16	05 50 936	07260
2½" x 2½"	65	10	05 50 475 ^M	02342
3" x 3"	80	10	05 50 938	07808
4" x 4"	100	10	05 50 940	07809

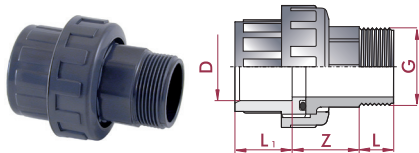
L	Z	G ₁	E	o-ring
16	13	1"	41	20 x 3
19	13	1¼"	52	28 x 3
22	13	1½"	60	33 x 3
26	15	2"	74	41 x 5
31	17	2¼"	90	47 x 5
38	21	2¾"	108	60 x 5
44	21	3½"	120	76 x 5
51	24	4"	138	91 x 5
61	26	5½"	179	110 x 5

UP. 51. SMT. BS - UNION BS
Union adaptor

- Female solvent socket x BSP male thread
- British Standard series
- EPDM O-Ring

Enlace 3 piezas

- Encolar hembra x roscar macho BSP
- Serie British Standard
- Anillo tórico en EPDM



D x G	DN	PN	REF.	CODE
½" x ½"	15	16	05 51 931	07810
¾" x ¾"	20	16	05 51 932	07811
1" x 1"	25	16	05 51 933	07812
1¼" x 1¼"	32	16	05 51 934	07813
1½" x 1½"	40	16	05 51 935	07262
2" x 2"	50	16	05 51 936	07263
2½" x 2½"	65	10	05 51 475 ^M	02359
3" x 3"	80	10	05 51 938	07814
4" x 4"	100	10	05 51 940	07815

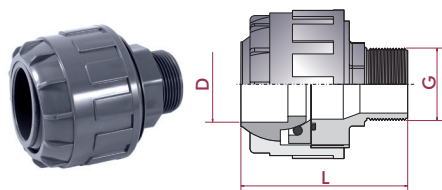
L ₁	L	Z
16	15	33
19	16	35
22	19	40
26	21	40
31	21	48
38	25	62
44	30	70
51	33	62
61	39	70

UP. 57. SFMT. BS - UNION BS
Self-align union

- Max. misalignment ±4°
- Female solvent socket x BSP male thread
- British Standard series

Manguito orientable

- Dealineación max. ±4°
- Encolar hembra x roscar macho BSP
- Serie British Standard



D x G	DN	PN	REF.	CODE
1½" x 1½"	40	10	05 57 955	21081

L
110

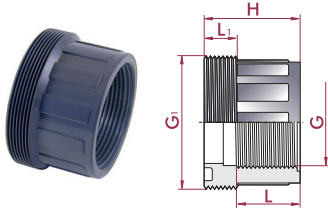
FITTINGS FOR UNIONS

ACCESORIOS ENLACES 3 PIEZAS

UP. 21. MFT - UNION BUSH BS

Union bush
• BSP male x female thread

Manguito enlace
• Roscar macho x hembra BSP



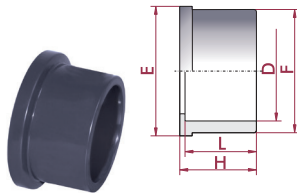
G ₁ x G	DN	PN	REF.	CODE
1" x 1/2"	15	10	05 21 620	02160
1 1/4" x 3/4"	20	10	05 21 625	02162
1 1/2" x 1"	25	10	05 21 632	02163
2" x 1 1/4"	32	10	05 21 640	02165
2 1/4" x 1 1/2"	40	10	05 21 650	02166
2 3/4" x 2"	50	10	05 21 663	02168
3 1/2" x 2 1/2"	65	10	05 21 675	02169
4" x 3"	80	10	05 21 690	02170
5 1/2" x 4"	100	10	05 21 710	02171

L	L ₁	H
16	10	26
19	11	29
22	12	32
30	15	39
34	16	46
38	18	56
44	18	62
51	18	69
61	31	79

UP. 22. SF. BS - UNION END BS

Union end
• Female solvent socket
• British Standard series

Manguito enlace
• Encolar hembra
• Serie British Standard



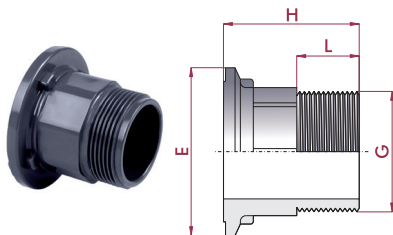
D	DN	PN	REF.	CODE
1/2"	15	16	05 22 901	27254
3/4"	20	16	05 22 902	27255
1"	25	16	05 22 903	27256
1 1/4"	32	16	05 22 904	27257
1 1/2"	40	16	05 22 905	27258
2"	50	16	05 22 906	27259
2 1/2"	65	16	05 22 075*	02178
3"	80	16	05 22 908	27260
4"	100	16	05 22 910	27261

L	E	H	F
16	30	19	27
19	39	22	36
22	45	25	41
26	56	29	53
31	63	34	59
38	78	41	74
44	97	47	92
51	110	56	105
61	147	66	131

UP. 22. MT- UNION END BS

Union end
• BSP male thread

Manguito enlace
• Roscar macho BSP



G	DN	PN	REF.	CODE
1/2"	15	10	05 22 420	25960
3/4"	20	10	05 22 425	25961
1"	25	10	05 22 432	25962
1 1/4"	32	10	05 22 440	25963
1 1/2"	40	10	05 22 450	25964
2"	50	10	05 22 463	25965
2 1/2"	65	10	05 22 475	25966
3"	80	10	05 22 490	25967
4"	100	10	05 22 510	25968

L	H	E
15	38	30
16	41	39
19	48	45
21	50	57
21	57	63
28	70	78
30	72	97
33	77	110
40	98	147

UP. 23. FT- UNION NUT BS

Union nut
• BSP female thread

Tuerca
• Roscar hembra BSP



G	PN	REF.	CODE
1" (1/2")	10	05 23 632	02188
1 1/4" (3/4")	10	05 23 640	02189
1 1/2" (1")	10	05 23 650	02191
2" (1 1/4")	10	05 23 663	02192
2 1/4" (1 1/2")	10	05 23 664	02193
2 3/4" (2")	10	05 23 676	02196
3 1/2" (2 1/2")	10	05 23 692	02197
4" (3")	10	05 23 710	02198
5 1/2" (4")	10	05 23 741	02199

L	H	E	D	Di
15	20	41	27	30
16	22	52	36	39
20	26	60	41	45
21	26	74	53	57
22	30	80	59	63
28	36	99	74	78
28	36	120	92	97
28	38	133	105	110
41	56	177	131	148

The size of the corresponding union is indicated in brackets.

Entre paréntesis se indica la medida del enlace 3 piezas correspondiente.

PVC-U UNIONS

ENLACES 3 PIEZAS PVC-U

Unions are the preferred choice over flange adaptors for the connection of plastic pipes. With no metal parts, there is no corrosion and the weight is also reduced.

They are only available in small sizes (up until D110).

The union ends are manufactured in plain ends for solvent socket or thread always according the sizing standards, doing this system appropriate to adapt to other elements or systems. Cepex unions feature an o-ring in order to ensure better unions, so it is no needed the use of PTFE tape between nut and union end (it is only needed in the threaded ends).

They are not recommended when connected to pipe under bending stress.

The union nut should be tightened by hand. Must use a strap wrench for big sizes (D75, D90, D110).

With this type of unions, it is possible to mix several plastic materials.

Cuando hay que unir plásticos, éstos son preferidos a las bridas, ya que no contienen ninguna parte de metal y el diámetro exterior es más reducido.

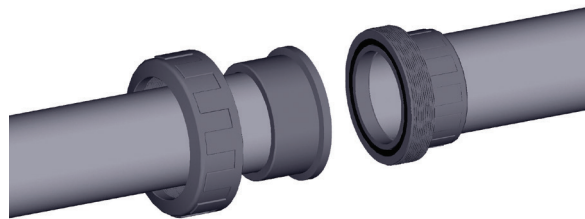
En contrapartida sólo están disponibles para diámetros pequeños (hasta D110).

Los manguitos de conexión están fabricados en terminaciones lisas de encolado o roscadas, siempre bajo normativas standards, haciendo posible la adaptación a otros componentes (incluso de materiales distintos).

Los enlaces 3 piezas Cepex incorporan junta para asegurar estanqueidad entre los dos manguitos de la unión, por lo que no debe usarse cinta de PTFE entre tuerca y manguito (usar cinta de PTFE solamente en las terminaciones de manguito roscadas). No son recomendables cuando el tubo tenga que estar sometido a fuerza de flexión (debido a posibles desalineaciones).

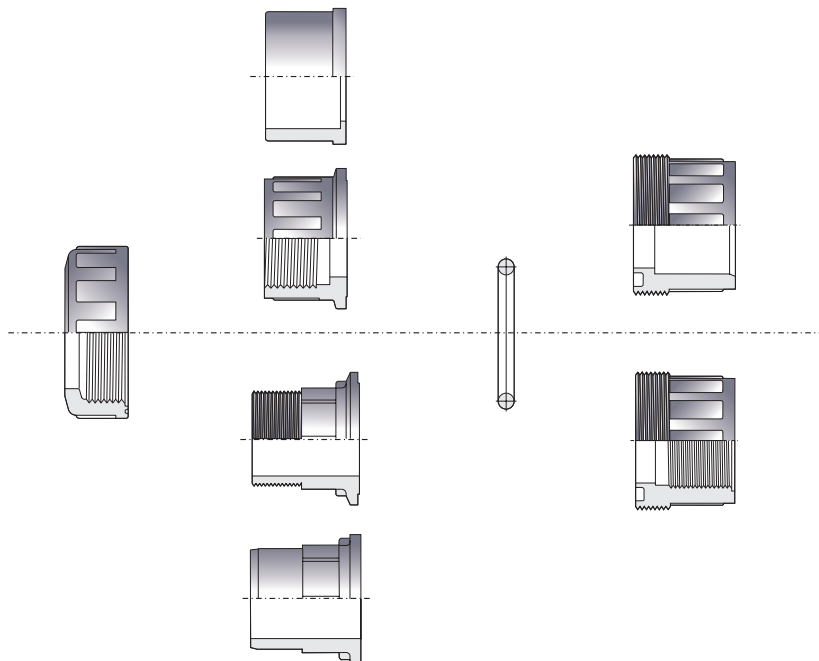
No es necesario el uso de ninguna herramienta, se rosca con las manos. Usar llave de cinta en diámetros grandes (D75, D90, D110).

Mediante estos enlaces, se pueden combinar diferentes tipos de plásticos.



CONNECTION POSSIBILITIES

POSIBILIDADES DE CONEXIÓN



Available standards

Solvent socket: metric, BS, ASTM
Threaded: BSP, NPT

Standards disponibles

Encolar: métrico, BS, ASTM
Roscar: BSP, NPT

Ask for other types of unions or other materials (PP, PE100...)
Consultar otros tipos de conexión o materiales (PP, PE100...)

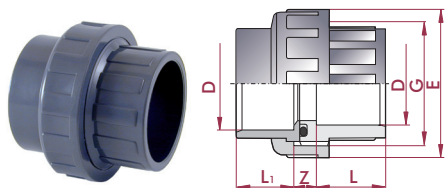
UP. 50. SF. MA - UNION MA

Union

- Female solvent socket
- ASTM series
- EPDM O-Ring

Enlace 3 piezas

- Encolar hembra
- Serie ASTM
- Anillo tórico en EPDM



D	DN	PN	REF.	CODE
½"	15	16	05 50 901 MA	25472
¾"	20	16	05 50 902 MA	25473
1"	25	16	05 50 903 MA	25474
1¼"	32	16	05 50 904 MA	25475
1½"	40	16	05 50 905 MA	11937
2"	50	16	05 50 906 MA	15690
2½"	65	10	05 50 907 MA	41528
3"	80	10	05 50 908 MA	41529
4"	100	10	05 50 910 MA	41530

L	Z	G	E	o-ring
16	13	1"	41	20 x 3
19	13	1¼"	52	38 x 3
22	13	1½"	60	33 x 3
26	15	2"	74	41 x 5
31	17	2¼"	80	47 x 5
38	21	2¾"	99	60 x 5
44	21	3½"	120	76 x 5
51	24	4"	138	91 x 5
61	26	5½"	179	110 x 5

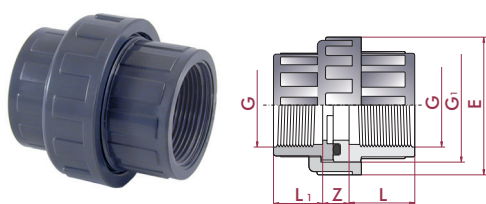
UP. 50. FT. MA - UNION MA

Union

- NPT female thread
- ASTM series
- EPDM O-Ring

Enlace 3 piezas

- Roscar hembra NPT
- Serie ASTM
- Anillo tórico en EPDM



G	DN	PN	REF.	CODE
½"	15	10	05 50 801	25476
¾"	20	10	05 50 802	25477
1"	25	10	05 50 803	25478
1¼"	32	10	05 50 804	25479
1½"	40	10	05 50 805	11811
2"	50	10	05 50 806	15692
2½"	65	10	05 50 807	53120

L	L ₁	Z	G ₁	E	o-ring
16	15	12	1"	41	20,2 x 3,5
19	17	12	1¼"	52	28,2 x 3,5
22	20	14	1½"	60	32,9 x 3,5
26	24	16	2"	74	40,6 x 5,3
31	25	18	2¼"	80	47,0 x 5,3
38	29	20	2¾"	99	59,7 x 5,3
44	34	21	3½"	120	75,6 x 5,3

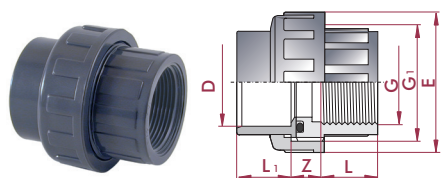
UP. 50. SFT. MA - UNION MA

Union adaptor

- Female solvent socket x NPT female thread
- ASTM series
- EPDM O-Ring

Enlace 3 piezas

- Encolar hembra x rosca hembra NPT
- Serie ASTM
- Anillo tórico en EPDM



D x G	DN	PN	REF.	CODE
1½" x 1½"	40	16	05 50 935 MA	11810
2" x 2"	50	16	05 50 936 MA	15691

L	Z	G ₁	E	o-ring
31	17	2¼"	90	47 x 5
38	21	2¾"	108	60 x 5

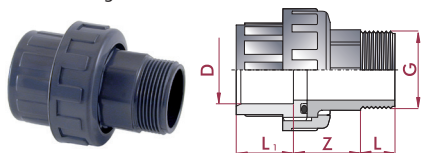
UP. 51. SMT. MA - UNION MA

Union adaptor

- Female solvent socket x NPT male thread
- ASTM series
- EPDM O-Ring

Enlace 3 piezas

- Encolar hembra x rosca macho NPT
- Serie ASTM
- Anillo tórico en EPDM



D x G	DN	PN	REF.	CODE
1½" x 1½"	40	16	05 51 935 MA	11813
2" x 2"	50	16	05 51 936 MA	15694

L ₁	L	Z
31	21	48
38	25	62

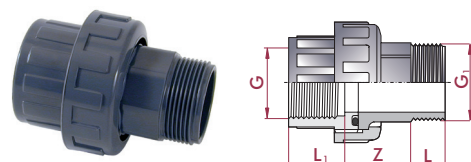
UP. 51. MFT. MA - UNION MA

Union

- NPT female x male thread
- ASTM series
- EPDM O-Ring

Enlace 3 piezas

- Roscar hembra x macho NPT
- Serie ASTM
- Anillo tórico en EPDM



G x G ₁	DN	PN	REF.	CODE
1" x 1"	25	10	05 51 803	71275
1¼" x 1¼"	32	10	05 51 804	71276
1½" x 1½"	40	10	05 51 805	11812
2" x 2"	50	10	05 51 806	15693

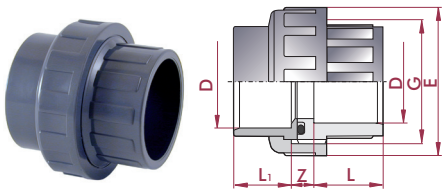
L ₁	L	Z
22	19	40
26	21	40
31	21	48
38	28	62

UP. 50. SF. MA ME - UNION MA ME
Union

- Female solvent socket
- ASTM - Metric Series
- EPDM O-Ring

Enlace 3 piezas

- Encolar hembra
- Serie ASTM - métrica
- Anillo tórico en EPDM



D	DN	PN	REF.	CODE
1" - 32	25	16	05 50 903 MAME	60557
1¼" - 40	32	16	05 50 904 MAME	60558
1½" - 50	40	16	05 50 905 MAME	66441
2" - 63	50	16	05 50 906 MAME	60561
3" - 90	80	10	05 50 908 MAME	60562
4" - 110	100	10	05 50 910 MAME	60563

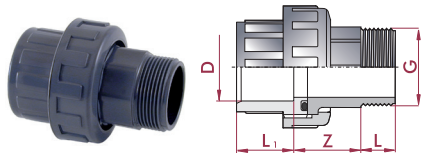
L	Z	G	E	o-ring
22	13	1½"	60	33 x 3
26	15	2"	74	41 x 5
31	17	2¼"	80	47 x 5
38	21	2¾"	99	60 x 5
51	24	4"	138	91 x 5
61	26	5½"	179	110 x 5

UP. 51. SMT. MA ME - UNION MA ME
Union adaptor

- Female solvent socket x BSP male thread
- ASTM series - Metric Series
- EPDM O-Ring

Enlace 3 piezas

- Encolar hembra x roscar macho BSP
- Serie ASTM - métrica
- Anillo tórico en EPDM



D x G	DN	PN	REF.	CODE
1½" x 1½"	40	16	05 99 281	0599281
2" x 2"	50	16	05 99 282	0599282
2½" x 2½"	65	16	05 99 283	0599283
3" x 3"	80	16	05 99 284	0599284

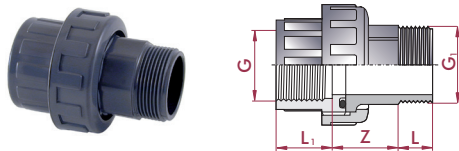
L ₁	L	Z
31	21	48
38	25	62
44	30	70
51	33	62

UP. 51. MFT. MA ME - UNION MA ME
Union

- BSP female x male thread NPT
- ASTM series
- ASTM series - Metric Series
- EPDM O-Ring

Enlace 3 piezas

- Roscar hembra BSP x macho NPT
- Serie ASTM
- Serie ASTM - métrica
- Anillo tórico en EPDM



D x G	DN	PN	REF.	CODE
1" x 1"	25	10	05 51 823	71300
1¼" x 1¼"	32	10	05 51 824	71301
1½" x 1½"	40	16	05 51 825	71302
2" x 2"	50	16	05 51 826	71303

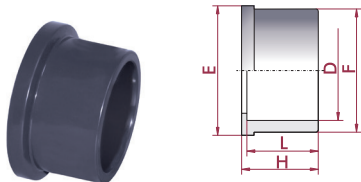
L ₁	L	Z
22	19	40
26	21	40
31	21	48
38	25	62

UP. 22. SF. MA - UNION END MA
Union end

- Female solvent socket
- ASTM series

Manguito enlace

- Encolar hembra
- Serie ASTM



D	DN	PN	REF.	CODE
½"	15	16	05 22 901 MA	22033
¾"	20	16	05 22 902 MA	22034
1"	25	16	05 22 903 MA	22035
1¼"	32	16	05 22 904 MA	22036
1½"	40	16	05 22 905 MA	22037
2"	50	16	05 22 906 MA	22038

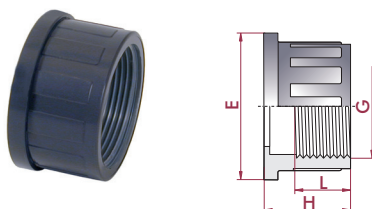
L	E	H	F
16	30	19	27
19	39	22	36
22	45	25	41
26	56	29	53
31	63	34	59
38	78	41	74

UP. 22. FT. MA - UNION END MA
Union end

- NPT female thread
- ASTM series

Manguito enlace

- Roscar hembra NPT
- Serie ASTM



G	DN	PN	REF.	CODE
½"	15	10	05 22 801	22051
¾"	20	10	05 22 802	22052
1"	25	10	05 22 803	22053
1¼"	32	10	05 22 804	22054
1½"	40	10	05 22 805	22055
2"	50	10	05 22 806	22056

L	H	E
15	21	30
17	23	39
20	26	45
24	30	56
25	35	63
29	42	78