

## PVC-U LOOSE FLANGES BRIDAS LOCAS PVC-U

- EN 1452 / ISO 15493 / ISO EN 558 / BS EN 1092-1 Flange System.
- We recommend to follow flange installation instructions carefully to avoid any unnecessary tensions.

- Sistema de bridas EN 1452 / ISO 15493 / ISO EN 558 / BS EN 1092-1.
- Recomendamos seguir exactamente las normas de montaje de bridas con objeto de evitar tensiones innecesarias.

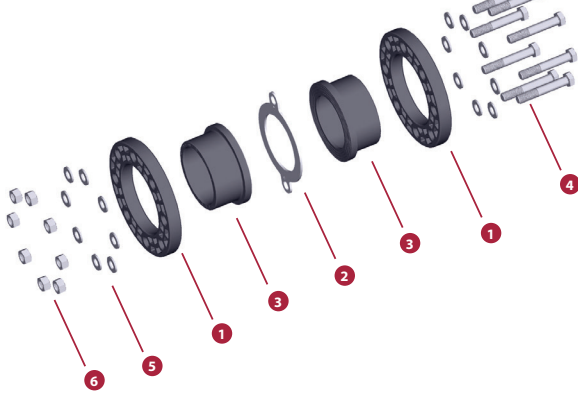
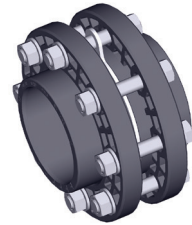


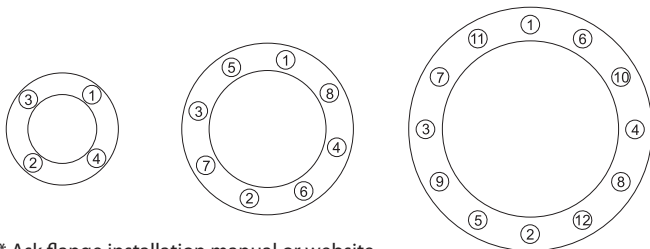
FIG.	Parts	Despiece	Material
1	Flange	Brida	PVC-U / PP
2	Flat gasket	Junta plana	EVA / EPDM
3	Flange adaptor **	Manguito portabridas **	PVC-U
4	Screw DIN 931	Tornillo DIN 931	5.6 Zinc plated steel / A2 Stainless steel *
5	Washer DIN 125-A	Arandela DIN 125-A	
6	Nut DIN 934	Tuerca DIN 934	

D	2		1		3
	EVA	EPDM	PVC-U	PP	PVC-U
20	✓	✓	✓		✓
25	✓	✓	✓		✓
32	✓	✓	✓		✓
40	✓	✓	✓		✓
50	✓	✓	✓	✓	✓
63	✓	✓	✓	✓	✓
75	✓	✓	✓	✓	✓
90	✓	✓	✓	✓	✓
110	✓	✓	✓	✓	✓
125	✓	✓	✓	✓	✓
140	✓	✓	✓	✓	✓
160	✓	✓	✓	✓	✓
200	✓	✓	✓	✓	✓
225	✓	✓	✓	✓	✓
250	✓	✓	✓	✓	✓
315	✓	✓	✓	✓	✓
400		✓	✓	✓	✓
500		✓	✓	✓	✓

\* On order A4 Stainless steel  
Bajo pedido acero inoxidable A4

\*\* Flange adaptor available in BS and ASTM solvent socket standards  
Manguito portabridas disponible en standards BS y ASTM

### TIGHTENING SEQUENCE ORDEN DE APRIETE



\* Ask flange installation manual or website  
Consultar manual instalación bridas o website

### TIGHTENING MAXIMUM TORQUE MÁXIMO PAR DE APRIETE

D	DN	inch	N · m	Kgf · cm	inch · lbs
<b>63-75</b>	65	2 ½"	25	255	221
<b>90</b>	80	3"	25	255	221
<b>110</b>	100	4"	30	306	265
<b>125-140</b>	125	5"	35	257	310
<b>160</b>	150	6"	40	408	354
<b>200-225</b>	200	8"	50	510	442
<b>250-280</b>	250	10"	80	816	708
<b>315</b>	300	12"	80	816	708

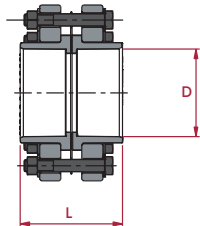
## UP. 52. RA - FLANGE KIT

#### Flange set (kit)

- Loose flange
- Female solvent socket
- Metric series

#### Enlace con bridas (kit)

- Brida loca
- Encolar hembra
- Serie métrica



D	DN	PN	REF. (EVA)	CODE (EVA)	REF. (EPDM)	CODE (EPDM)	L
20	15	16	05 52 020 RA	<b>66996</b>	05 52 020 RA EPDM	<b>67071</b>	
25	20	16	05 52 025 RA	<b>66997</b>	05 52 025 RA EPDM	<b>67072</b>	
32	25	16	05 52 032 RA	<b>66998</b>	05 52 032 RA EPDM	<b>67073</b>	
40	32	16	05 52 040 RA	<b>66999</b>	05 52 040 RA EPDM	<b>67074</b>	
50	40	16	05 52 050 RA	<b>67000</b>	05 52 050 RA EPDM	<b>67075</b>	74
63	50	16	05 52 063 RA	<b>67037</b>	05 52 063 RA EPDM	<b>67076</b>	87
75	65	16	05 52 075 RA	<b>67059</b>	05 52 075 RA EPDM	<b>67077</b>	100
90	80	16	05 52 090 RA	<b>67064</b>	05 52 090 RA EPDM	<b>67078</b>	115
110	100	16	05 52 110 RA	<b>67065</b>	05 52 110 RA EPDM	<b>67079</b>	136
125	16	16	05 52 125 RA	<b>67070</b>	05 52 125 RA EPDM	<b>67080</b>	152
140	125	16	05 52 140 RA	<b>67066</b>	05 52 140 RA EPDM	<b>67081</b>	170
160	150	10	05 52 160 RA	<b>67067</b>	05 52 160 RA EPDM	<b>67082</b>	186
200	10	10	05 52 200 RA	<b>67068</b>	05 52 200 RA EPDM	<b>67083</b>	227
225	200	10	05 52 225 RA	<b>67069</b>	05 52 225 RA EPDM	<b>67084</b>	255
250	10	10	05 52 250 RA	<b>66955</b>	05 52 250 RA EPDM	<b>66973</b>	
315	300	10	05 52 315 RA	<b>66956</b>	05 52 315 RA EPDM	<b>66974</b>	
400	400	6	-	-	05 52 400 RA EPDM	<b>66957</b>	
500	500	4	-	-	05 52 500 RA EPDM	<b>66958</b>	

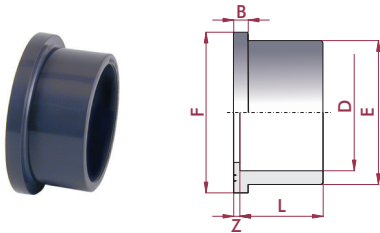
## UP. 10. SF - FLANGE ADAPTOR

### PVC-U flange adaptor (sub flange)

- Female solvent socket
- Metric series

### Manguito portabridas PVC-U

- Encolar hembra
- Serie métrica



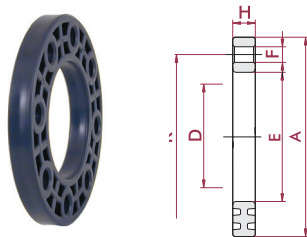
D	DN	PN	REF.	CODE
20	15	16	05 10 020 <sup>3</sup>	<b>07692</b>
25	20	16	05 10 025 <sup>3</sup>	<b>07693</b>
32	25	16	05 10 032 <sup>3</sup>	<b>07694</b>
40	32	16	05 10 040 <sup>3</sup>	<b>07695</b>
50	40	16	05 10 050 <sup>3</sup>	<b>02020</b>
63	50	16	05 10 063 <sup>3</sup>	<b>02021</b>
75	65	16	05 10 075 <sup>3</sup>	<b>02022</b>
90	80	16	05 10 090 <sup>3</sup>	<b>02023</b>
110	100	16	05 10 110 <sup>3</sup>	<b>02024</b>
125	110	16	05 10 125 <sup>3</sup>	<b>02025</b>
140	125	16	05 10 140 <sup>3</sup>	<b>02026</b>
160	150	10	05 10 160 <sup>3</sup>	<b>02027</b>
200	175	10	05 10 200	<b>02028</b>
225	200	10	05 10 225	<b>02029</b>
250	225	10	05 10 250	<b>02030</b>
315	300	10	05 10 315	<b>02031</b>
400	375	6	05 10 400 <sup>*</sup>	<b>05341</b>
500	480	4	05 10 402 <sup>*</sup>	<b>05342</b>

L	Z	B	E	F
16	3	6	27	34
19	3	7	33	41
22	3	7	41	50
26	3	8	50	61
31	3	8	61	73
38	3	9	76	90
44	3	10	90	106
51	5	11	108	125
61	5	12	131	150
69	5	13	148	168
76	5	14	165	188
86	5	16	188	213
106	6	20	225	247
119	6	25	248	274
131	8	27	282	328
164	8	30	342	378
206	12	30	432	483
153	8	24	532	574

## UP. 11. FLG - FLANGE

### PVC-U loose flange

### Brida loca PVC-U



D	DN	PN	REF.	CODE
20	15	16	05 11 020	<b>07696</b>
25	20	16	05 11 025	<b>07697</b>
32	25	16	05 11 032	<b>07698</b>
40	32	16	05 11 040	<b>07699</b>
50	40	16	05 11 050	<b>02032</b>
63	50	16	05 11 063	<b>02033</b>
75	65	16	05 11 075	<b>02034</b>
90	80	16	05 11 090	<b>02035</b>
110	100	16	05 11 110	<b>02036</b>
125	125	16	05 11 125	<b>02037</b>
140	125	16	05 11 140	<b>02038</b>
125 <sup>4</sup>		16	05 11 141 <sup>3</sup>	<b>02039</b>
160	150	10	05 11 160	<b>02040</b>
200		10	05 11 200	<b>02041</b>
225	200	10	05 11 225	<b>02042</b>
200 <sup>5</sup>		10	05 11 226 <sup>3</sup>	<b>09039</b>
250		10	05 11 250	<b>02043</b>
315	300	10	05 11 315	<b>02044</b>
400	400	6	05 11 400 <sup>*</sup>	<b>05343</b>
500	500	4	05 11 402 <sup>*</sup>	<b>05344</b>

E	A	H	K	F
28	95	12	65	14 x 4
34	105	13	75	14 x 4
42	115	15	85	14 x 4
51	140	16	100	18 x 4
62	150	17	110	18 x 4
78	165	18	125	18 x 4
92	185	22	145	18 x 4
110	200	23	160	18 x 8
133	220	24	180	18 x 8
150	230	26	190	18 x 8
167	250	28	210	18 x 8
150	250	28	210	18 x 8
190	285	31	240	22 x 8
226	315	32	270	22 x 8
250	340	32	295	22 x 8
226	340	32	295	22 x 8
284	400	34	350	22 x 12
348	445	36	400	22 x 12
442	565	34	515	26 x 16
533	657	30	600	26 x 20

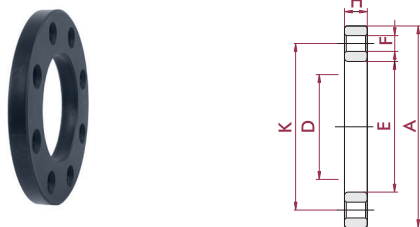
- <sup>4</sup> Hole distance corresponding to DN125 flange  
<sup>5</sup> Hole distance corresponding to DN200 flange

- <sup>4</sup> Brida con distancia entre agujeros correspondiente a la brida DN125  
<sup>5</sup> Brida con distancia entre agujeros correspondiente a la brida DN200

## PP. 12. FLG - PP FLANGE

### PP flange (backing ring)

### Brida PP



D	DN	PN	REF.	CODE
50	40	16	05 12 050	<b>02045</b>
63	50	16	05 12 063	<b>02046</b>
75	65	16	05 12 075	<b>02047</b>
90	80	16	05 12 090	<b>02048</b>
110	100	16	05 12 110	<b>02049</b>
125		16	05 12 125	<b>02050</b>
140	125	16	05 12 140	<b>02051</b>
125 <sup>4</sup>		16	05 12 141 <sup>3</sup>	<b>02052</b>
160	150	10	05 12 160	<b>02053</b>
200		10	05 12 200	<b>02054</b>
225	200	10	05 12 225	<b>02055</b>
200 <sup>5</sup>		10	05 12 226 <sup>3</sup>	<b>02056</b>

E	H	A	K	F
62	18	150	110	18 x 4
78	19	165	125	18 x 4
92	20	185	145	18 x 4
110	22	200	160	18 x 8
133	24	220	180	18 x 8
149	26	230	190	18 x 8
167	28	250	210	18 x 8
149	28	250	210	18 x 8
190	30	285	240	22 x 8
227	32	315	270	22 x 8
250	34	340	295	22 x 8
227	34	340	295	22 x 8

- <sup>4</sup> Hole distance corresponding to DN125 flange  
<sup>5</sup> Hole distance corresponding to DN200 flange

- <sup>4</sup> Brida con distancia entre agujeros correspondiente a la brida DN125  
<sup>5</sup> Brida con distancia entre agujeros correspondiente a la brida DN200

At the time to make the relationship between adaptor and flange, for the compatibility it prevails the D size of the corresponding pipe.  
 Siempre que se deba relacionar manguito y brida, prevalece en su compatibilidad la medida D del tubo correspondiente.

\* Distributed product  
 \* Producto comercializado

## PVC-U FIX FLANGES BRIDAS FIJAS PVC-U

• EN 1452 / ISO 15493 Flange System.  
• We recommend to follow flange installation instructions carefully to avoid any unnecessary tensions.

• Sistema de bridas EN 1452 / ISO 15493 .  
• Recomendamos seguir exactamente las normas de montaje de bridas con objeto de evitar tensiones innecesarias.

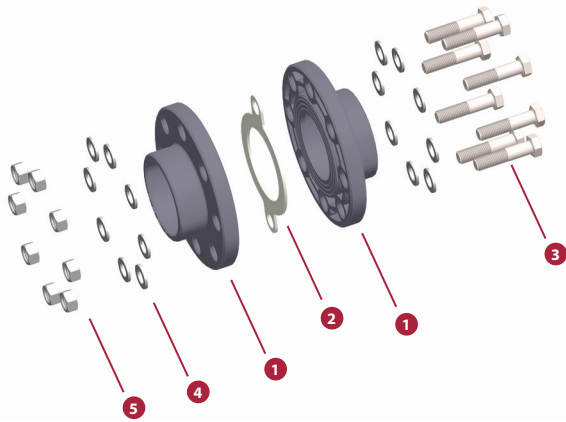
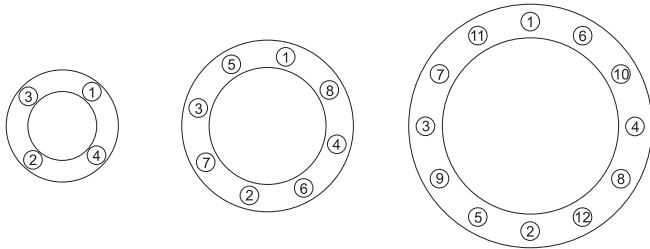


FIG.	Parts	Despiece	Material
1	Flange	Brida	PVC-U / PP
2	Flat gasket	Junta plana	EVA / EPDM
3	Screw DIN 931	Tornillo DIN 931	5,6 Zinc plated steel / A2 Stainless steel *
4	Washer DIN 125-A	Arandela DIN 125-A	
5	Nut DIN 934	Tuerca DIN 934	

\* On order A4 Stainless steel  
Bajo pedido acero inoxidable A4

### TIGHTENING SEQUENCE ORDEN DE APRIETE



\* Ask flange installation manual or website  
Consultar manual instalación bridas o website

D	2		1
	EVA	EPDM	PVC-U
20	✓	✓	✓
25	✓	✓	✓
32	✓	✓	✓
40	✓	✓	✓
50	✓	✓	✓
63	✓	✓	✓
75	✓	✓	✓
90	✓	✓	✓
110	✓	✓	✓
125	✓	✓	✓
140	✓	✓	✓
160	✓	✓	✓
200	✓	✓	✓
225	✓	✓	✓

### TIGHTENING MAXIMUM TORQUE MÁXIMO PAR DE APRIETE

D	DN	inch	N · m	Kgf · cm	inch · lbs
63-75	65	2 ½"	25	255	221
90	80	3"	25	255	221
110	100	4"	30	306	265
125-140	125	5"	35	257	310
160	150	6"	40	408	354
200-225	200	8"	50	510	442
250-280	250	10"	80	816	708
315	300	12"	80	816	708

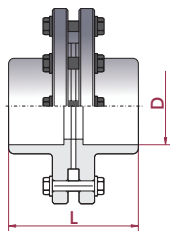
## UP. 52. SF - FLANGE KIT

### Flange set (kit)

- Fix flange
- Female solvent socket
- Metric series

### Enlace con bridas (kit)

- Brida fija
- Encolar hembra
- Serie métrica



D	DN	PN	REF. (EVA)	CODE (EVA)	REF. (EPDM)	CODE (EPDM)	L
20	15	16	05 52 020	66949	05 52 020 EPDM	66959	
25	20	16	05 52 025	66950	05 52 025 EPDM	66960	
32	25	16	05 52 032	66951	05 52 032 EPDM	66961	
40	32	16	05 52 040	66952	05 52 040 EPDM	66962	
50	40	16	05 52 050	66953	05 52 050 EPDM	66963	
63	50	16	05 52 063	66954	05 52 063 EPDM	66964	
75	65	16	05 52 075	02371	05 52 075 EPDM	66965	97
90	80	16	05 52 090	02372	05 52 090 EPDM	66966	115
110	100	16	05 52 110	02373	05 52 110 EPDM	66967	136
125	110	16	05 52 125	02374	05 52 125 EPDM	66968	152
140	125	16	05 52 140	02375	05 52 140 EPDM	66969	166
160	150	10	05 52 160	02376	05 52 160 EPDM	66970	186
200	175	10	05 52 200	02377	05 52 200 EPDM	66971	227
225	200	10	05 52 225	02378	05 52 225 EPDM	66972	255

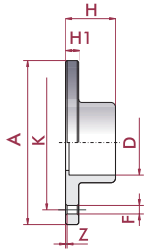
## UP. 25. FLG - STUB AND BACKING RING

**PVC-U fix flange (stub & backing ring)**

- Female solvent socket
- Metric series

**Brida fija PVC-U**

- Encolar hembra
- Serie métrica



<sup>4</sup> Hole distance corresponding to DN125 flange

<sup>4</sup> Brida con distancia entre agujeros correspondiente a la brida DN125

D	DN	PN	REF.	CODE
20	15	16	05 25 020 *	<b>22575</b>
25	20	16	05 25 025 *	<b>22576</b>
32	25	16	05 25 032 *	<b>22577</b>
40	32	16	05 25 040 *	<b>22578</b>
50	40	16	05 25 050 *	<b>22579</b>
63	50	16	05 25 063 *	<b>22580</b>
75	65	16	05 25 075	<b>02226</b>
90	80	16	05 25 090	<b>02227</b>
110	100	16	05 25 110	<b>02228</b>
125		16	05 25 125	<b>02229</b>
125 <sup>4</sup>		16	05 25 126 <sup>3</sup>	<b>02234</b>
140	125	16	05 25 140	<b>02230</b>
160	150	10	05 25 160	<b>02231</b>
200		10	05 25 200	<b>02232</b>
225	200	10	05 25 225	<b>02233</b>

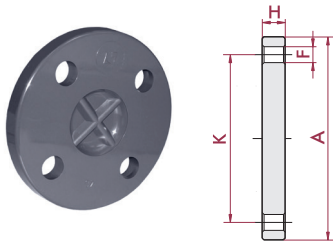
H	H1	Z	A	K	F
20	13	4	95	65	14 x 4
23	14	4	105	75	14 x 4
26	16	4	115	85	14 x 4
30	17	4	142	100	18 x 4
35	18	4	152	110	18 x 4
42	20	4	165	125	18 x 4
47	19	3	185	145	18 x 4
56	22	5	200	160	18 x 8
66	23	5	220	180	18 x 8
74	26	5	230	190	18 x 8
74	26	5	250	210	18 x 8
81	28	5	250	210	18 x 8
91	30	5	285	240	22 x 8
112	30	6	315	270	22 x 8
125	33	6	340	295	22 x 8

\* Distributed product  
\* Producto comercializado

UP. 37. FLG - BLIND FLANGE

PVC-U blind flange

Brida ciega PVC-U



<sup>5</sup> Hole distance corresponding to DN200 flange

<sup>5</sup> Brida con distancia entre agujeros correspondiente a la brida DN200

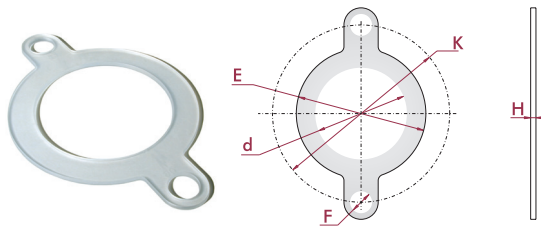
D	DN	PN	REF.	CODE
20	15	16	05 37 020 *	22561
25	20	16	05 37 025 *	22562
32	25	16	05 37 032 *	22563
40	32	16	05 37 040 *	22564
50	40	16	05 37 050 *	22565
63	50	16	05 37 063 *	22566
75	65	16	05 37 075 *	22567
90	80	16	05 37 090 *	22568
110	100	16	05 37 110 *	22569
125		16	05 37 125 *	22570
140	125	16	05 37 140 *	22571
160	150	10	05 37 160 *	22572
200 <sup>5</sup>		10	05 37 200 <sup>5</sup> *	22573
225	200	10	05 37 225 *	22574

H	A	K	F
11	95	65	14 x 4
12	105	75	14 x 4
14	115	85	14 x 4
15	142	100	18 x 4
16	152	110	18 x 4
18	165	125	18 x 4
19	185	145	18 x 4
20	200	160	18 x 8
22	220	180	18 x 8
24	230	190	18 x 8
26	250	210	18 x 8
28	285	240	22 x 8
30	340	295	22 x 8
30	340	295	22 x 8

EVA. 14 - FLAT GASKET

EVA flat gasket  
• Metric series

Junta plana EVA  
• Serie métrica



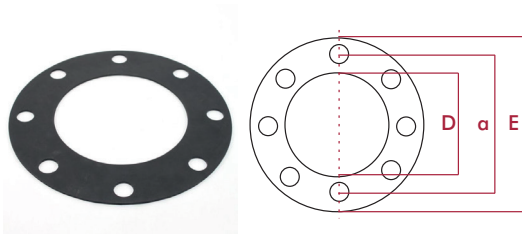
D	DN	REF.	CODE
20	15	05 14 020	07700
25	20	05 14 025	07701
32	25	05 14 032	07702
40	32	05 14 040	07703
50	40	05 14 050	02061
63	50	05 14 063	02062
75	65	05 14 075	02063
90	80	05 14 090	02064
110	100	05 14 110	02065
125		05 14 125	02066
140	125	05 14 140	02067
160	150	05 14 160	02068
200		05 14 200	02069
225	200	05 14 225	02070
250		05 14 250	02071
315	300	05 14 315	02072

d	E	H	K	F
20	32	2	65	14
25	39	2	75	14
32	48	2	85	14
40	59	2	100	18
50	71	3	110	18
63	88	3	125	18
75	104	3	145	18
90	123	3	160	18
110	148	4	180	18
125	166	4	190	18
140	186	4	210	18
160	211	4	240	22
200	245	5	270	22
225	275	5	295	22
250	328	3	350	22
315	378	3	400	22

PDM. 14 - FLAT GASKET

EPDM flat gasket  
• Metric series

Junta plana EPDM  
• Serie métrica



D	DN	REF.	CODE
20	15	05 14 020 EPDM *	66933
25	20	05 14 025 EPDM *	66934
32	25	05 14 032 EPDM *	66935
40	32	05 14 040 EPDM *	66936
50	40	05 14 050 EPDM *	66937
63	50	05 14 063 EPDM *	66938
75	65	05 14 075 EPDM *	66939
90	80	05 14 090 EPDM *	66940
110	100	05 14 110 EPDM *	66941
125		05 14 125 EPDM *	66942
140	125	05 14 140 EPDM *	66943
160	150	05 14 160 EPDM *	66944
200		05 14 200 EPDM *	66945
225	200	05 14 225 EPDM *	66946
250		05 14 250 EPDM *	66947
315	300	05 14 315 EPDM *	66948
400	353	05 14 400 EPDM *	05345
500	475	05 14 402 EPDM *	05346


H	E	a	F
2,5	93	34	16 x 4
2,5	103	41	19 x 4
2,5	115	50	22 x 4
2,5	140	100	20 x 4
2,5	150	110	20 x 4
2,5	165	125	20 x 4
2,5	185	145	20 x 4
2,5	200	160	20 x 8
2,5	220	180	20 x 8
2,5	245	210	20 x 8
2,5	250	210	20 x 8
2,5	285	240	22 x 8
2,5	335	295	22 x 8
2,5	340	295	22 x 8
2,5	395	350	22 x 12
2,5	440	400	22 x 12
2,5	565	515	22 x 16
2,5	660	620	25 x 20

\* Distributed product  
\* Producto comercializado

## BOLTS TORNILLERÍA

Required bolt size depending on each application of the flange:  
butterfly valve, coupling or swing check valve.

Modelo y tamaño necesario de tornillería para cada una de las aplicaciones  
de la brida: válvula de mariposa, enlace o válvula de clapeta.



Flange set (loose flange)  
*Enlace bridas (brida loca)*


Industrial ball valve with loose flanges  
*Válvula de bola Industrial con bridas locas*

FLANGE SIZE	SCREW SIZE	UNITS	CODE	CODE
			5,6 zinc plated steel	A2 stainless steel
D20, D25	M12 x 60	4	16061	60515
D32	M12 x 60	4	16061	60515
D40	M16 x 70	4	02437	60516
D50	M16 x 80	4	02437	60516
D63	M16 x 80	4	02438	60517
D75	M16 x 90	4	02439	60518
D90	M16 x 90	8	02439	60518
D110	M16 x 100	8	66775	66783
D125	M16 x 110	8	66776	66784
D140	M16 x 120	8	02440	60519
D160	M20 x 130	8	66778	66786
D200	M20 x 140	8	66779	66787
D225	M20 x 140	8	66779	66787
D250	M20 x 140	12	66779	66787
D280	M20 x 150	12	66780	66788
D315	M20 x 160	12	02448	60535
D400	M24 x 160	12	66782	66790
D500	M24 x 140	12	66781	66789




Flange set (fix flange)  
*Enlace bridas (brida fija)*

FLANGE SIZE	SCREW SIZE	UNITS	CODE	CODE
			5,6 zinc plated steel	A2 stainless steel
D20, D25	M 12 x 60	4	16061	60515
D32	M 12 x 60	4	16061	60515
D40	M 16 x 70	4	02437	60516
D50	M 16 x 70	4	02437	60516
D63	M 16 x 70	4	02437	60516
D75	M 16 x 70	4	02437	60516
D90	M 16 x 70	8	02437	60516
D110	M 16 x 80	8	02438	60517
D125	M 16 x 80	8	02438	60517
D140	M 16 x 90	8	02439	60518
D160	M 20 x 90	8	02446	60533
D200	M 20 x 110	8	02447	60534
D225	M 20 x 110	8	02447	60534




Butterfly valve (loose flange)  
*Válvula mariposa (brida loca)*

FLANGE SIZE	SCREW SIZE	UNITS	CODE	CODE
			5,6 zinc plated steel	A2 stainless steel
D63	M 16 x 120	4	02440	60519
D75	M 16 x 140	4	02442	60526
D90	M 16 x 150	8	02443	60527
D110	M 16 x 160	8	02444	60528
D125	M 16 x 170	8	02445	60529
D140	M 16 x 170	8	02445	60529
D160	M 20 x 200	8	20263	60538
D200	M 20 x 210	8	02451	60539
D225	M 20 x 230	8	02452	60547
D250	M 20 x 270	12	07721	60548
D280	M 20 x 270	12	07721	60548
D315	M 20 x 310	12	07722	60549



Butterfly valve (fix flange)  
*Válvula mariposa (brida fija)*

FLANGE SIZE	SCREW SIZE	UNITS	CODE	CODE
			5,6 zinc plated steel	A2 stainless steel
D63	M 16 x 120	4	02440	60519
D75	M 16 x 120	4	02440	60519
D90	M 16 x 130	8	02441	60525
D110	M 16 x 130	8	02441	60625
D125	M 16 x 140	8	02442	60526
D140	M 16 x 150	8	02443	60527
D160	M 20 x 160	8	02448	60535
D200	M 20 x 180	8	02449	60536
D225	M 20 x 190	8	02450	60537



Swing check valve (loose flange)  
*Válvula de clapeta (brida loca)*

FLANGE SIZE	SCREW SIZE	UNITS	CODE	CODE
			5,6 zinc plated steel	A2 stainless steel
D75	M 16 x 120	4	02440	60519
D90	M 16 x 120	8	02440	60519
D110	M 16 x 120	8	02440	60519
D125	M 16 x 130	8	02441	60525
D140	M 16 x 130	8	02441	60525
D160	M 20 x 160	8	02448	60535
D200	M 20 x 180	8	02448	60535
D225	M 20 x 180	8	02449	60536
D250	M 20 x 210	12	02451	60539
D315	M 20 x 230	12	02452	60547

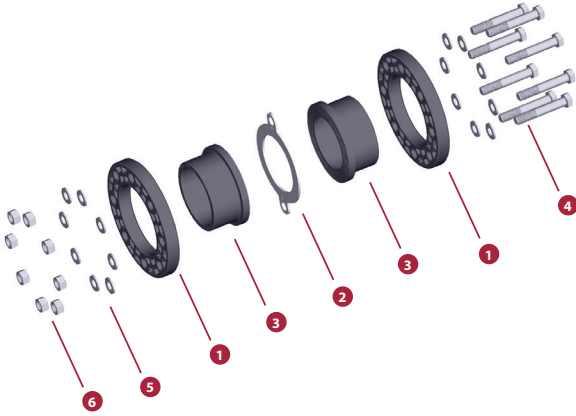
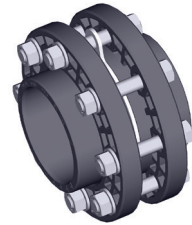
\* Valid for Industrial, Standard and Classic Series

\* Válido para Serie Industrial, Standard y Classic

## PVC-U LOOSE FLANGES BRIDAS LOCAS PVC-U

• ANSI ASME 16B.5 | ANSI ASME 16.5/16.34 Flange System.  
• We recommend to follow flange installation instructions carefully to avoid any unnecessary tensions.

• Sistema de bridas ANSI ASME 16B.5 | ANSI ASME 16.5/16.34.  
• Recomendamos seguir exactamente las normas de montaje de bridas con objeto de evitar tensiones innecesarias.



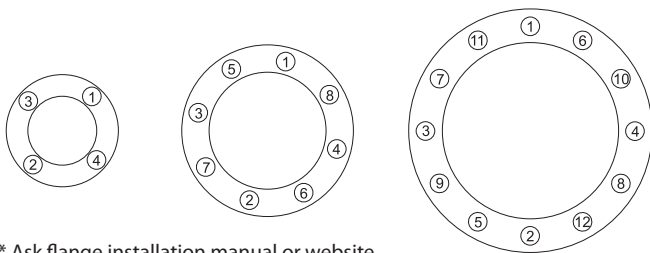
D	1 PVC-U	3 PVC-U
2"		✓
2½"		✓
3"	✓	✓
4"	✓	✓
5"		✓
6"	✓	✓
8"	✓	✓

FIG.	Parts	Despiece	Material
1	Flange	Brida	PVC-U / PP
2	Flat gasket	Junta plana	EVA / EPDM
3	Flange adaptor **	Manguito portabridas **	PVC-U
4	Screw DIN 931	Tornillo DIN 931	5,6 Zinc plated steel / A2 Stainless steel *
5	Washer DIN 125-A	Arandela DIN 125-A	
6	Nut DIN 934	Tuerca DIN 934	

\* On order A4 Stainless steel  
Bajo pedido acero inoxidable A4

\*\* Flange adaptor available in BS and ASTM solvent socket standards  
Manguito portabridas disponible en standards BS y ASTM

### TIGHTENING SEQUENCE ORDEN DE APRIETE



\* Ask flange installation manual or website  
Consultar manual instalación bridas o website

### TIGHTENING MAXIMUM TORQUE MÁXIMO PAR DE APRIETE

D	DN	inch	N · m	Kgf · cm	inch · lbs
<b>63-75</b>	65	2 ½"	25	255	221
<b>90</b>	80	3"	25	255	221
<b>110</b>	100	4"	30	306	265
<b>125-140</b>	125	5"	35	257	310
<b>160</b>	150	6"	40	408	354
<b>200-225</b>	200	8"	50	510	442
<b>250-280</b>	250	10"	80	816	708
<b>315</b>	300	12"	80	816	708

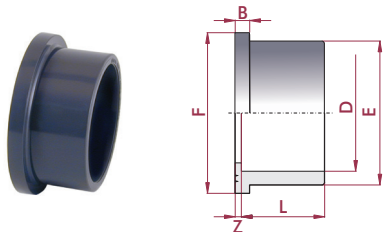
## UP. 10. SF. MA - FLANGE ADAPTOR MA

### PVC-U flange adaptor (sub flange)

- Female solvent socket
- ASTM series

### Manguito portabridas PVC-U

- Encolar hembra
- Serie ASTM



D	PN	REF.	CODE
2"	16	05 10 906 MA	<b>66836</b>
2½"	16	05 10 907 MA	<b>07097</b>
3"	16	05 10 908 MA	<b>07098</b>
4"	16	05 10 910 MA	<b>07099</b>
5"	16	05 10 913 MA	<b>07100</b>
6"	10	05 10 914 MA	<b>07101</b>
8"	10	05 10 917 MA	<b>07102</b>

L	Z	B	E	F
38	3	9	76	90
44	3	10	90	106
51	5	11	108	125
61	5	12	131	150
76	5	14	165	188
86	5	16	188	213
106	6	20	248	274

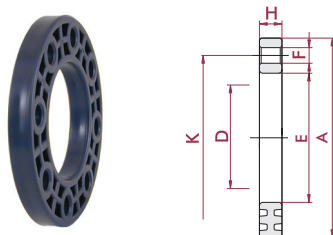
## UP. 11. FLG - FLANGE

### PVC-U loose flange

- ANSI-150

### Brida loca PVC-U

- ANSI-150



D	DN	PN	REF.	CODE
3"	80	16	05 99 104	<b>0599104</b>
4"	100	16	05 99 105	<b>0599105</b>
6"	150	16	05 99 106	<b>0599106</b>
8"	200	16	05 99 107	<b>0599107</b>

E	A	H	K	F
110	190,5	23	150-159	8 x 19
133	230	28	175-190,5	8 x 19,5
190	285	32	240,2	8 x 23
250	343	38	290-298	8 x 23

\* These flanges have slotted holes to allow the installation according to ASTM 16B.5 - ANSI 150 and ISO 15493.

\* Estas bridas tienen los agujeros dimensionados para permitir la instalación acorde a las normativas ASTM 16B.5 - ANSI 150 y ISO 15493.